





TECHNICAL SHEET

	E2 → E6	E3J3	E4J3
Max dynamic moment [daNm]	31455	28650	30245

Max capacity [kg]	Version	HB250	HB280
	E1	9580	9785
	E2	9480	9685
	E3	9275	9530
	E4	9070	9325
	E5	8970	9175
	E6	8950	9125
	E3J3	1450/4650	1580/4800
E4J3	1100/4500	1210/4650	

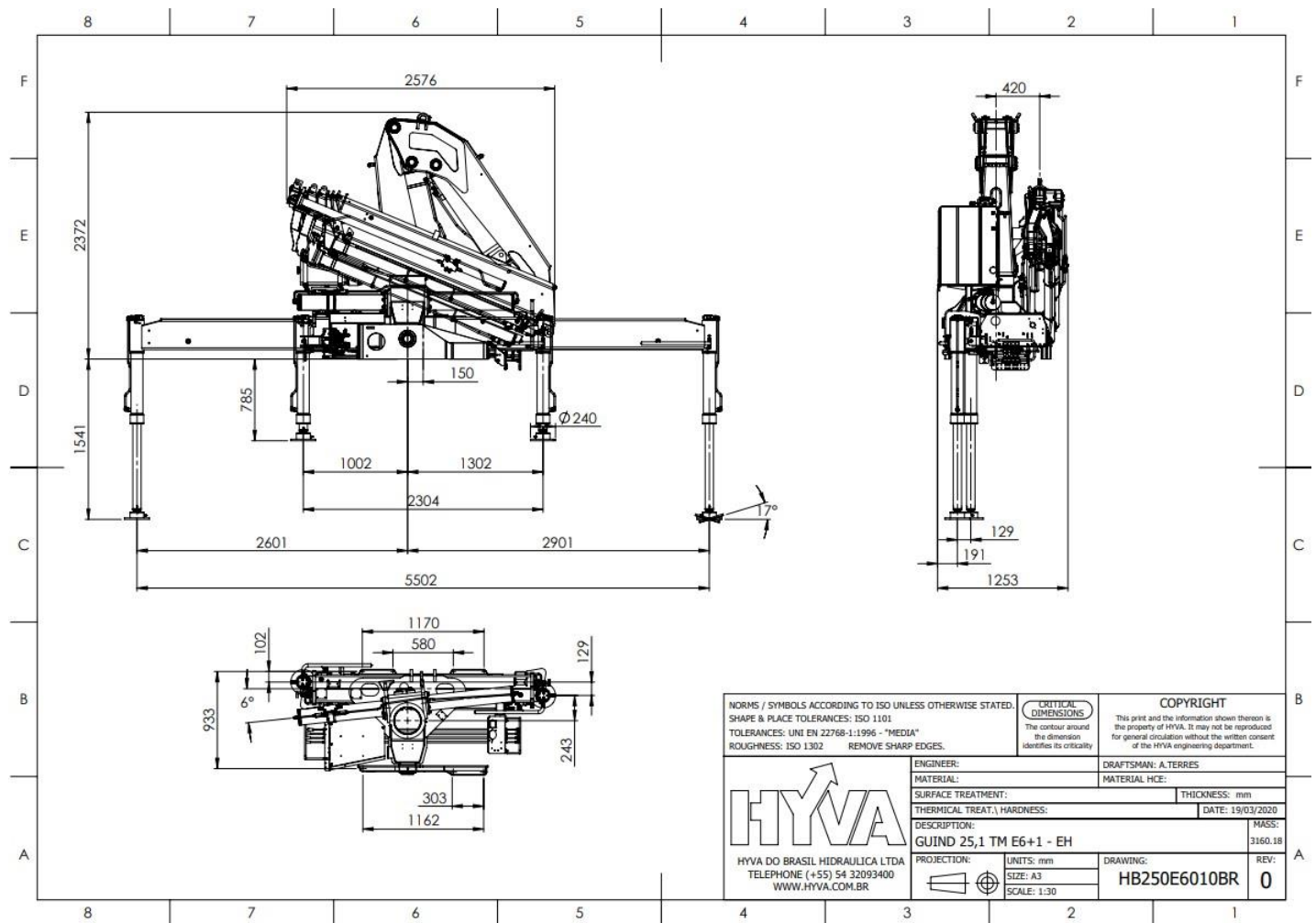
	Version	HB250		HB280	
		ST	EX (NO CE)	ST	EX (NO CE)
Crane weight [kg]	E1	3020	3065	3050	3095
	E2	3200	3245	3250	3295
	E3	3340	3385	3390	3435
	E4	3500	3545	3550	3595
	E5	3640	3685	3690	3735
	E6	3735	3780	3785	3830
	E3J3	3890	3935	3940	3985
	E4J3	4040	4085	4090	4135

Max force on the stabilizer leg (daN)	11740
Max stabilizer pressure on the ground (daN/cm²)	37
Max working pressure	290 HB250 305 HB280
Max oil flow to main relief valve	50 dm ³ /min
Oil tank capacity	160 dm ³
Slewing moment	3185 daNm
Slewing angle	397°
Absorbed power	32 kW 42 HP
Design standard	DIN 15018 EN 12999

Fittings for connection with pump		NO RDC	RDC
Control valve pressure line		M 7/8" - 14 JIC	M 7/8" - 14 JIC
Tank suction line		M 1" 1/2 BSP	M 1" 1/2 BSP

VERSÃO SEM CONTROLE REMOTO

HB250E6010BR

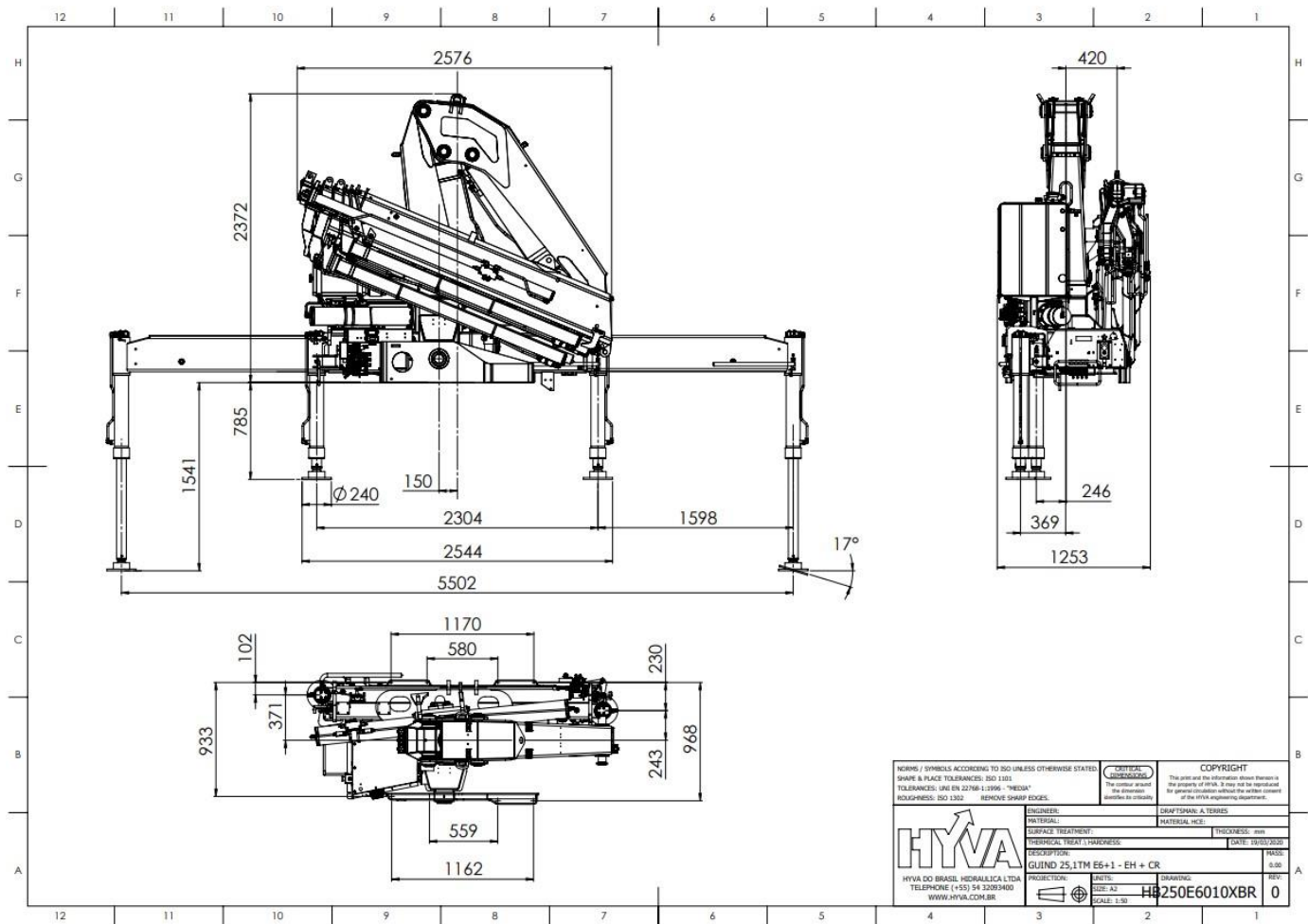


Para detalhes a respeito de outras versões, por gentileza contatar o Departamento Técnico
 For details regarding other versions, please contact Technical Department
 Para detalles sobre otras versiones, por favor contacte al Departamento Técnico

Tie mounting rods	N°8 M24x2 39NiCrMo3 QT
-------------------	------------------------

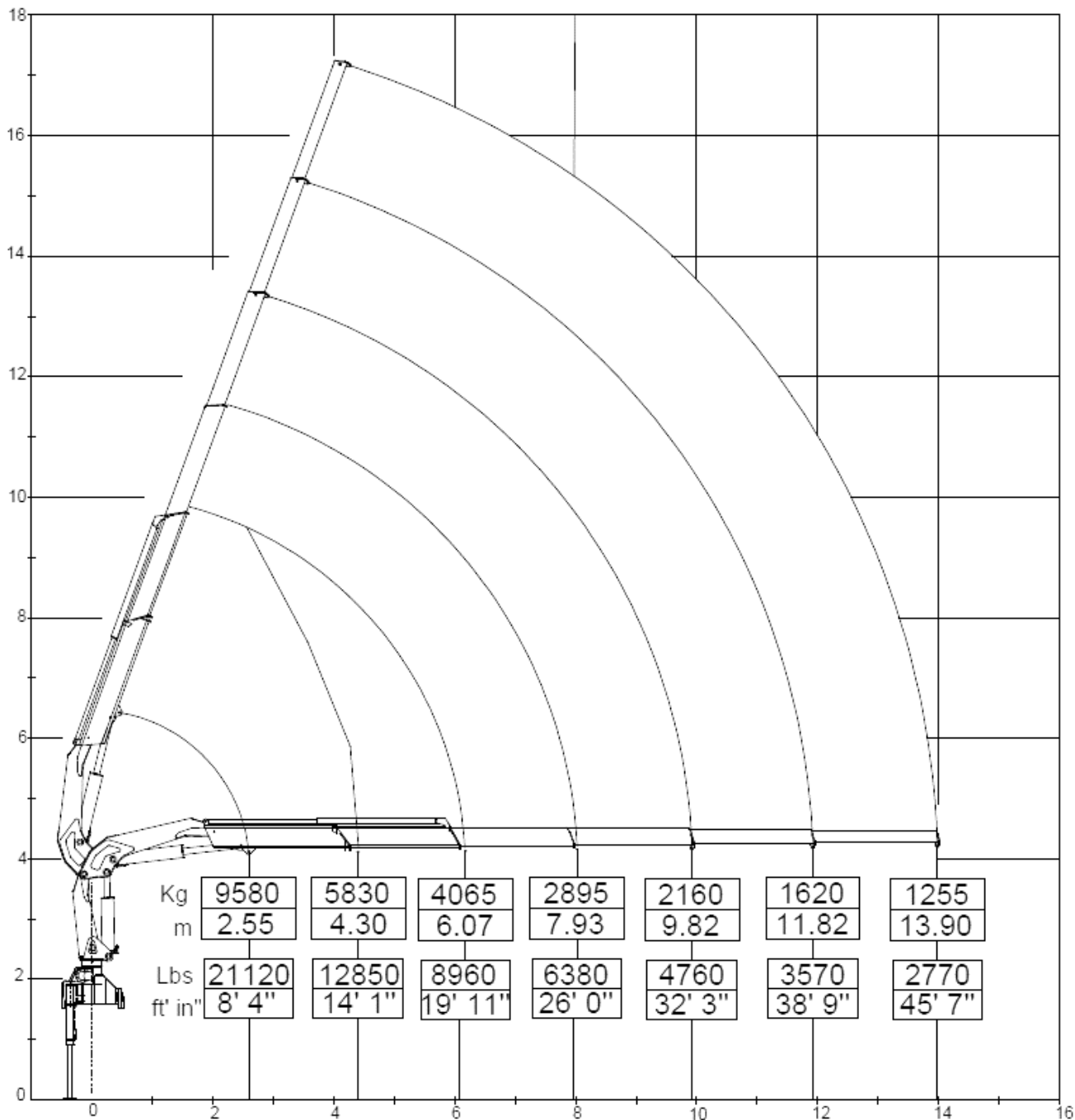
VERSÃO COM CONTROLE REMOTO

HB250E6010XBR

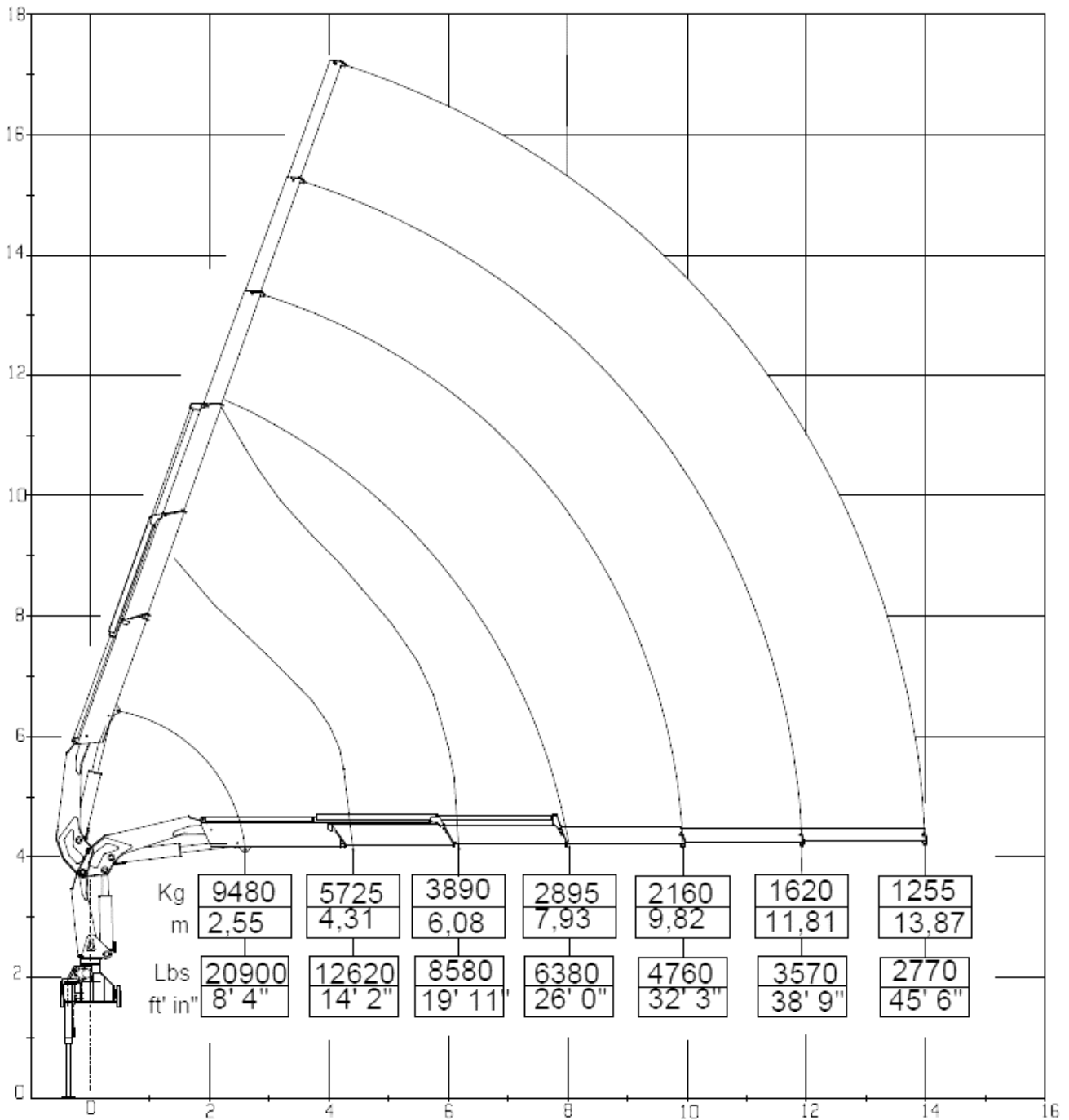


Para detalhes a respeito de outras versões, por gentileza contatar o Departamento Técnico
 For details regarding other versions, please contact Technical Department
 Para detalles sobre otras versiones, por favor contacte al Departamento Técnico

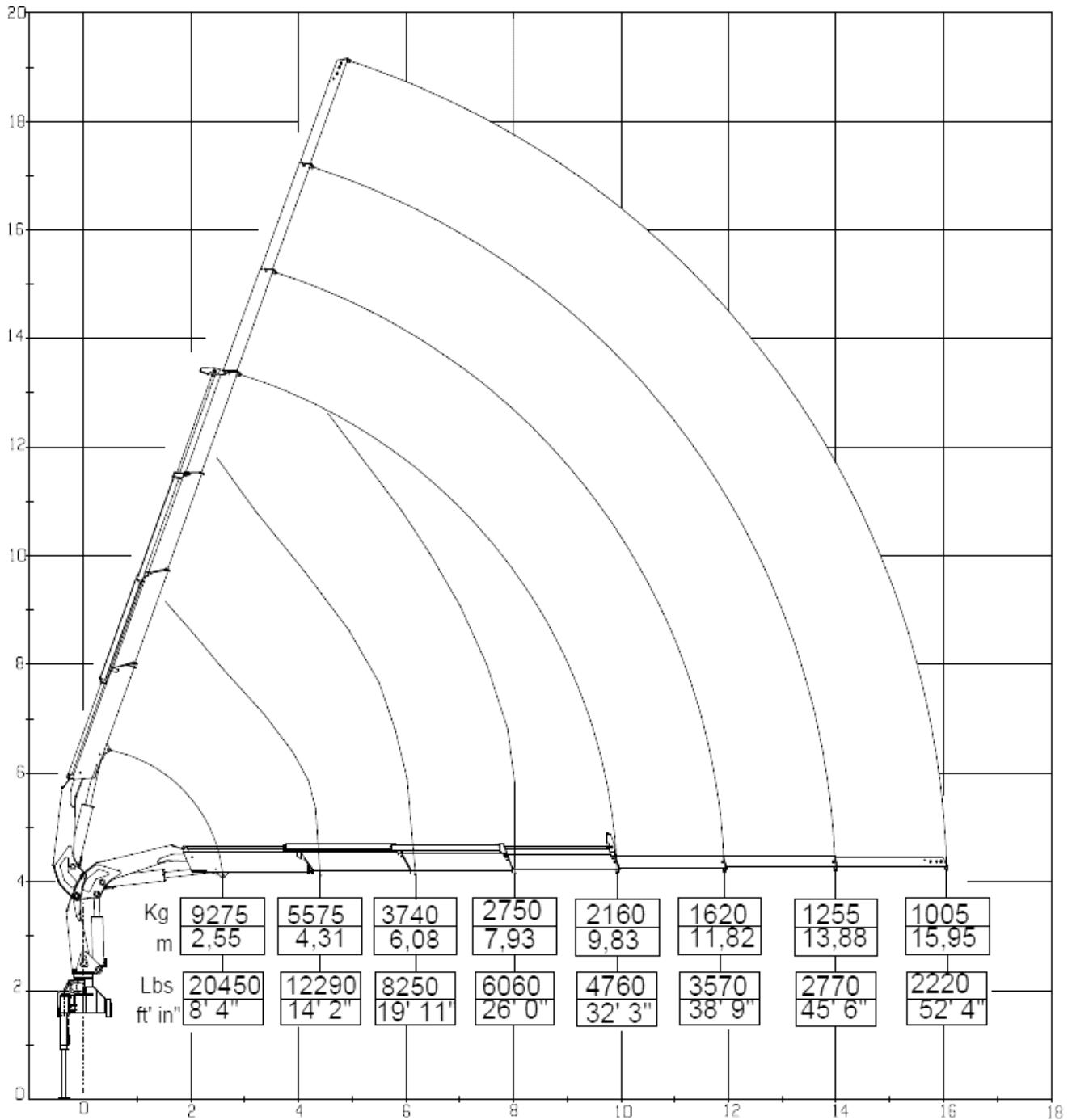
Tie mounting rods	N°8 M24x2 39NiCrMo3 QT
-------------------	------------------------



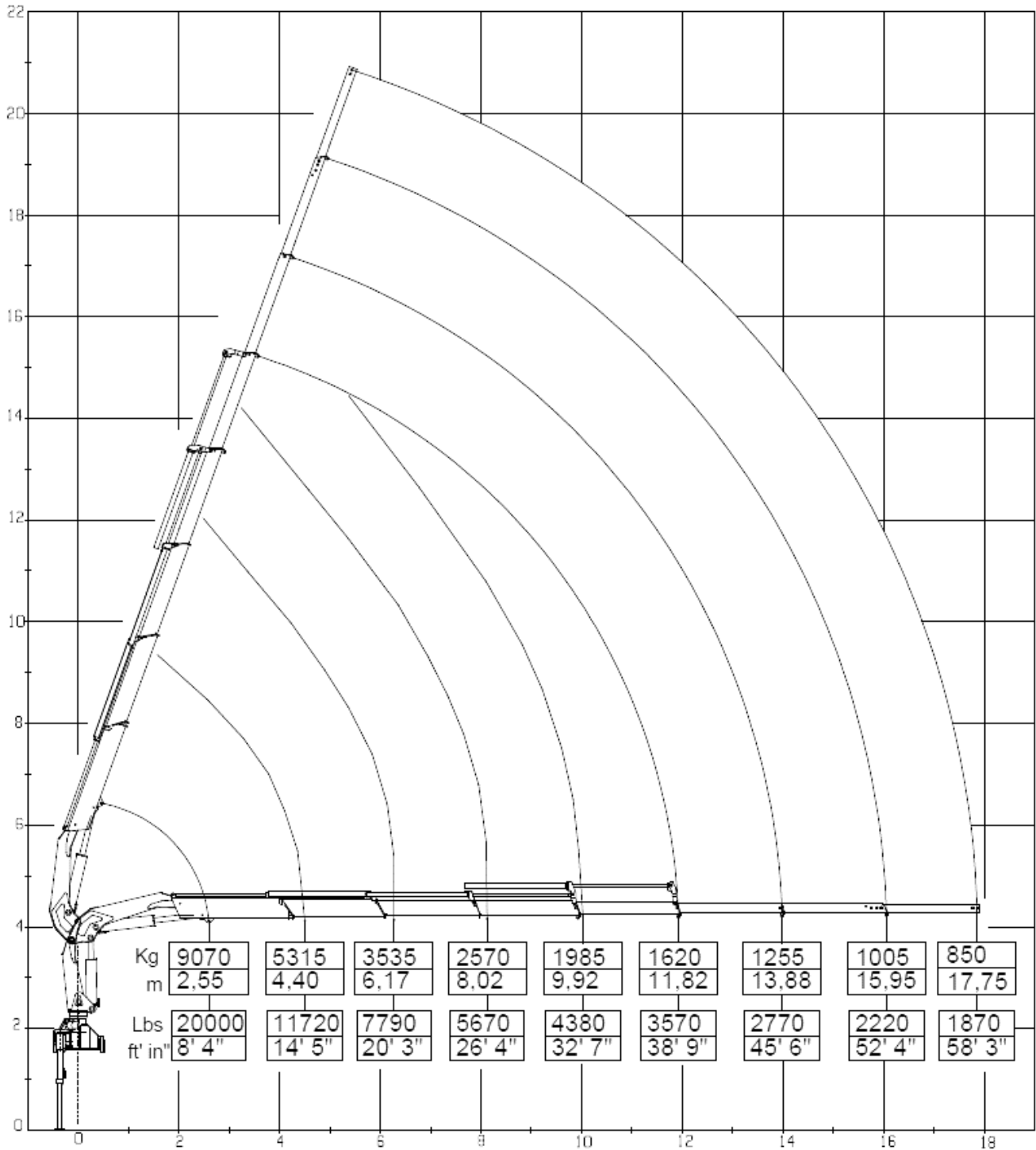
Lifting capacity = 25,07 tm



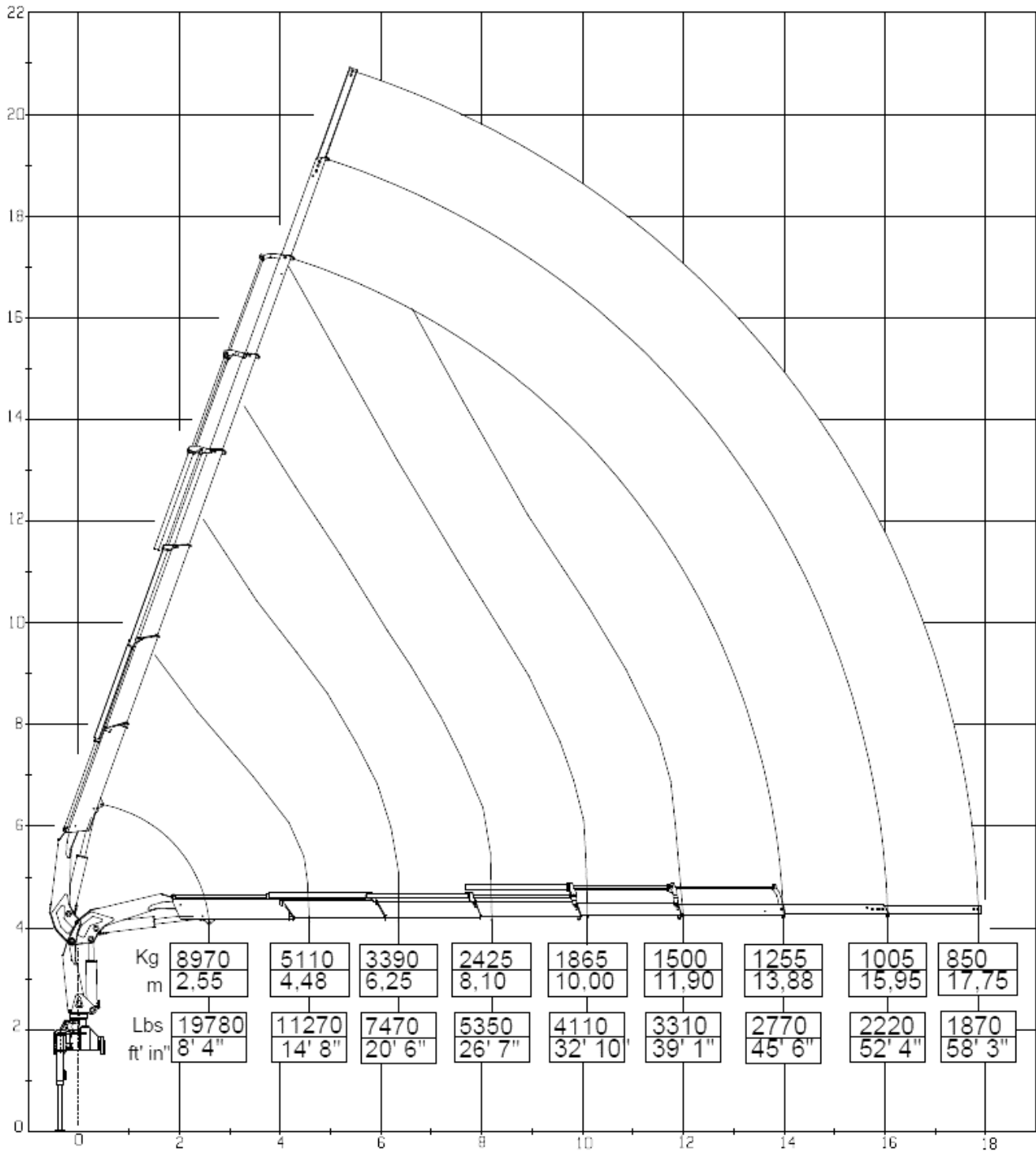
Lifting capacity = 24,67 tm



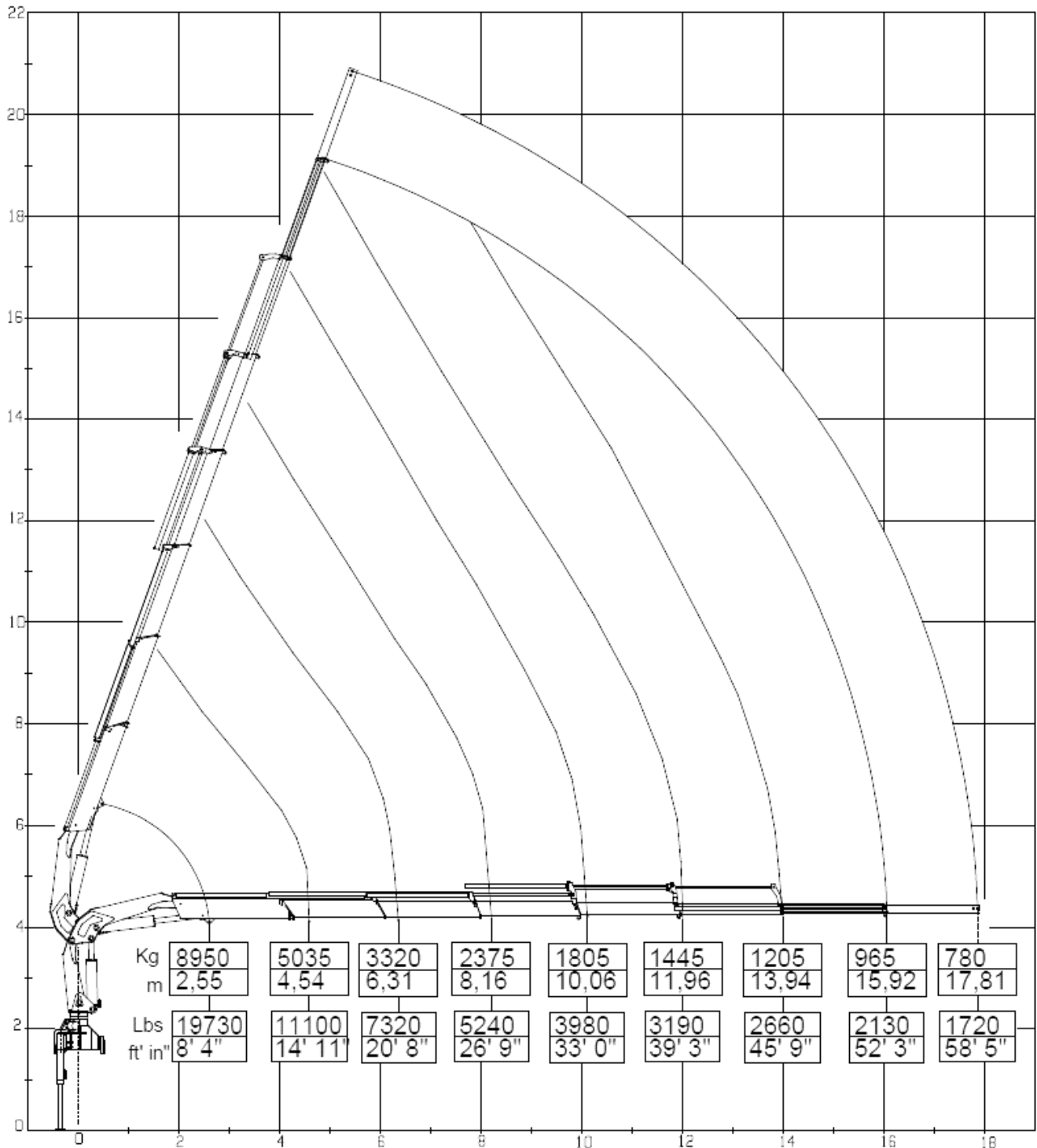
Lifting capacity = 24,03 tm



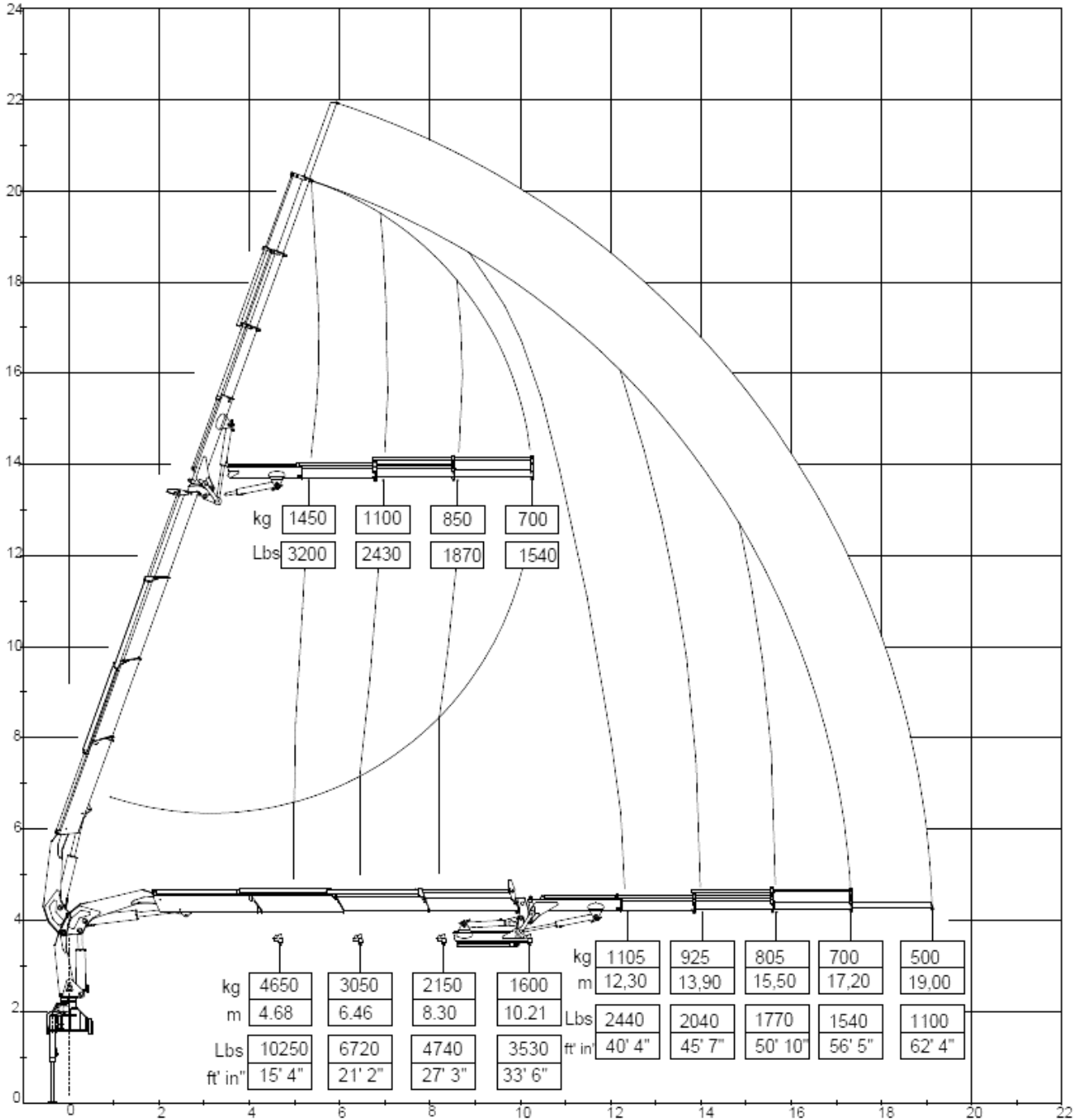
Lifting capacity = 23,39 tm



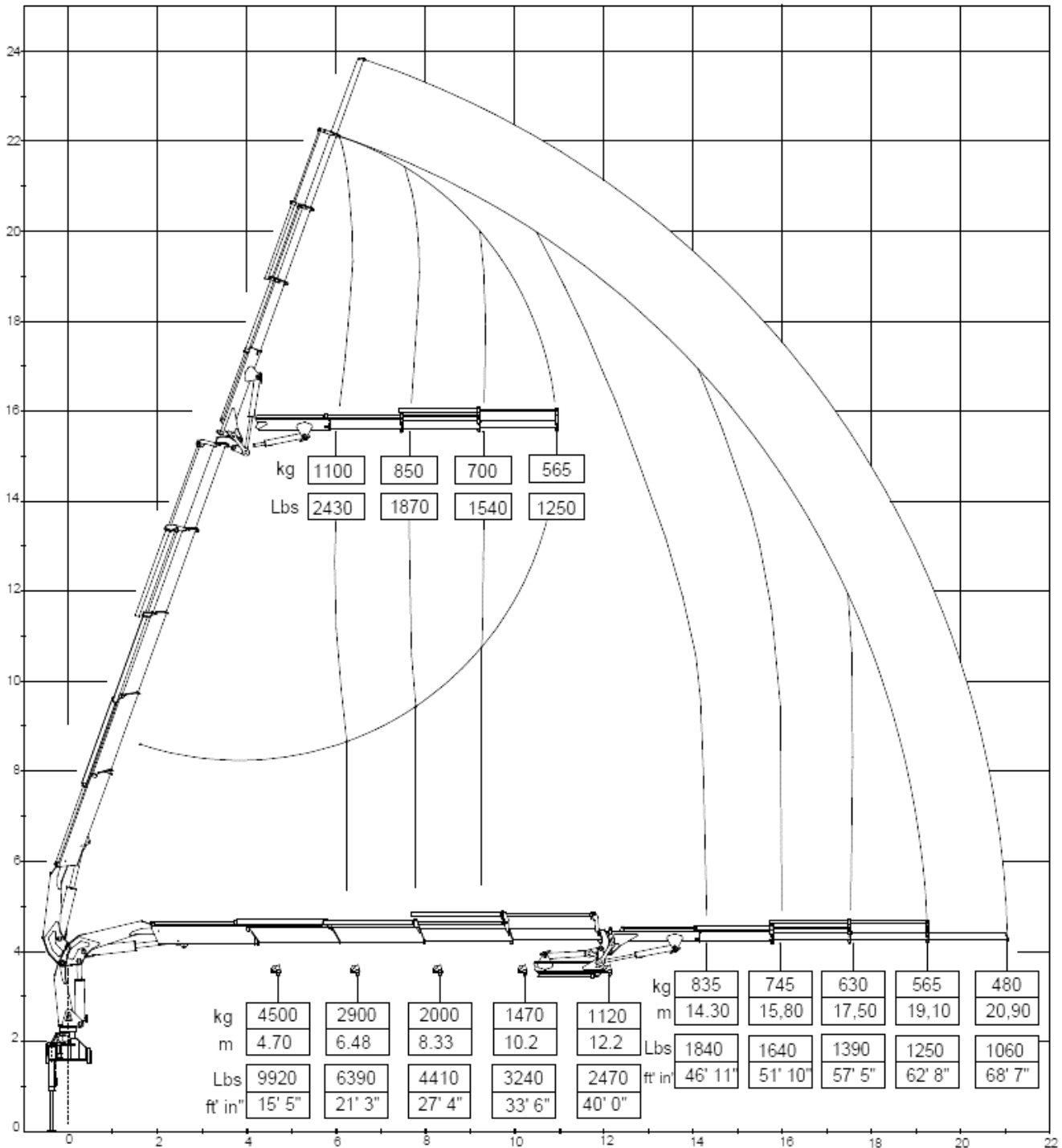
Lifting capacity = 22,89 tm



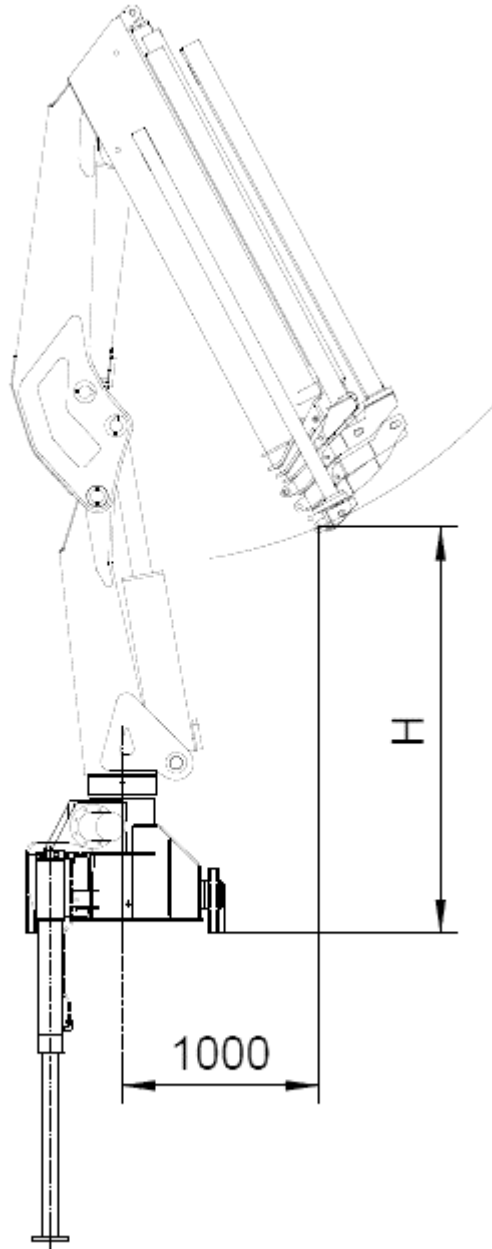
Lifting capacity = 22,86 tm



Lifting capacity = 13,59 tm



Lifting capacity = 11,94 tm



	H
E1	2310 mm
E2	2310 mm
E3	2310 mm
E4	2210 mm
E5	2130 mm
E6	2070 mm

LIFTING CYLINDER

Cylinder bore	185
Cyl. ext. diameter	210
Rod diameter	100 - 60
Centers (open)	1746
Centers (closed)	1052
Stroke	694
Artic. pin Ø	7/8" - 14
Pin material	65
Cylinder bore	39NiCrMo3 QT

ARTICULATION CYLINDER

Cylinder bore	185
Cyl. ext. diameter	210
Rod diameter	100 - 60
Centers (open)	2129
Centers (closed)	1244
Stroke	885
Artic. pin Ø	7/8" - 14
Pin material	65
Cylinder bore	39NiCrMo3 QT

1ST EXTENSION CYLINDER

Cylinder bore	85
Cyl. ext. diameter	100
Rod diameter	60 - 45
Centers (open)	3956
Centers (closed)	2086
Stroke	1770
Artic. pin Ø	7/8" - 14
Pin material	30
Cylinder bore	39NiCrMo3 QT

2ND EXTENSION CYLINDER

Cylinder bore	85
Cyl. ext. diameter	100
Rod diameter	60 - 45
Centers (open)	2003
Centers (closed)	153
Stroke	1850
Artic. pin Ø	7/8" - 14
Pin material	30
Cylinder bore	C40 NORM

3RD - 4RD EXTENSION CYLINDER

Cylinder bore	80
Cyl. ext. diameter	95
Rod diameter	50 - 35
Centers (open)	2053
Centers (closed)	153
Stroke	1900
Artic. pin Ø	7/8" - 14
Pin material	30
Cylinder bore	C40 NORM

5TH EXTENSION CYLINDER

Cylinder bore	65
Cyl. ext. diameter	75
Rod diameter	40 - 25
Centers (open)	2095
Centers (closed)	115
Stroke	1980
Artic. pin Ø	7/8" - 14
Pin material	25
Cylinder bore	C40 NORM

6TH EXTENSION CYLINDER

Cylinder bore	65
Cyl. ext. diameter	75
Rod diameter	40 - 25
Centers (open)	2065
Centers (closed)	85
Stroke	1980
Artic. pin Ø	7/8" - 14
Pin material	25
Cylinder bore	C40 NORM

ROTATION CYLINDER

Cylinder bore	130
Cyl. ext. diameter	150
Rod diameter	-
Centers (open)	-
Centers (closed)	-
Stroke	831
Artic. pin Ø	-
Pin material	-
Cylinder bore	-

JIB ARTICULATION CYLINDER

<i>Cylinder bore</i>	110
<i>Cyl. ext. diameter</i>	125
<i>Rod diameter</i>	60 - 0
<i>Centers (open)</i>	1693
<i>Centers (closed)</i>	990
<i>Stroke</i>	703
<i>Artic. pin Ø</i>	-
<i>Pin material</i>	45 - 60
<i>Cylinder bore</i>	C40 - 39NiCrMo3

1ST EXTENSION CYLINDER OF JIB

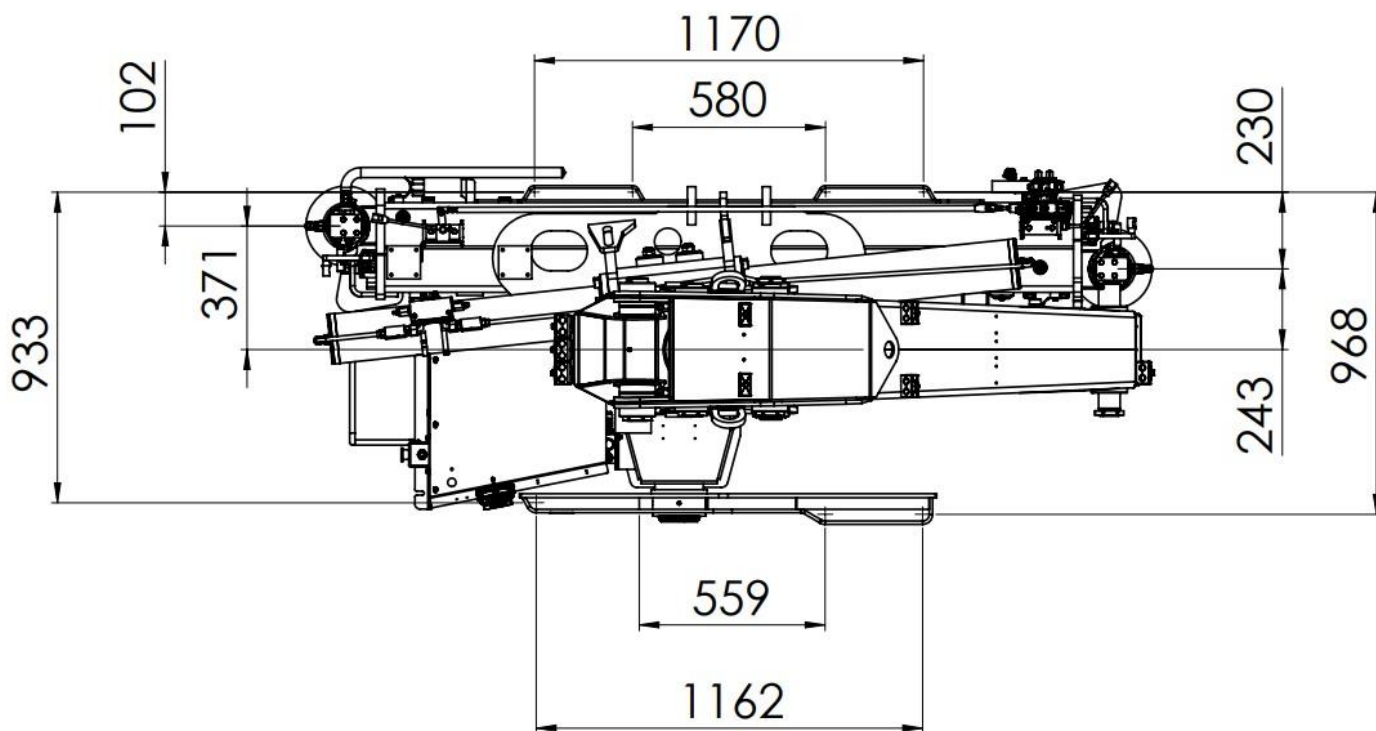
<i>Cylinder bore</i>	65
<i>Cyl. ext. diameter</i>	75
<i>Rod diameter</i>	45 - 0
<i>Centers (open)</i>	3340
<i>Centers (closed)</i>	1790
<i>Stroke</i>	1550
<i>Artic. pin Ø</i>	3/4" - 16
<i>Pin material</i>	20
<i>Cylinder bore</i>	C40

2ND - 3ND EXTENSION CYLINDER OF JIB

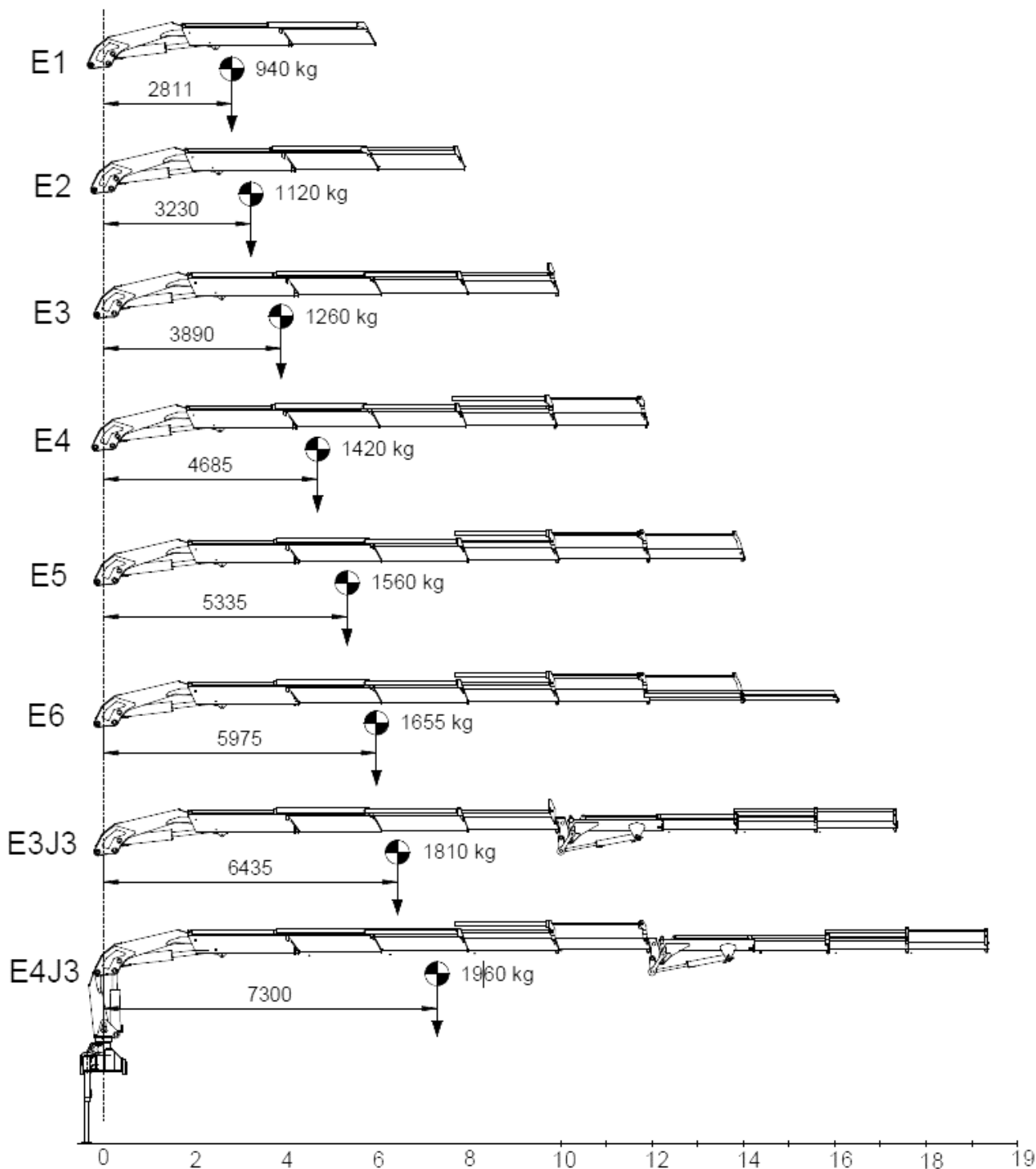
<i>Cylinder bore</i>	60
<i>Cyl. ext. diameter</i>	70
<i>Rod diameter</i>	35 - 0
<i>Centers (open)</i>	1740
<i>Centers (closed)</i>	90
<i>Stroke</i>	1650
<i>Artic. pin Ø</i>	3/4" - 16
<i>Pin material</i>	20
<i>Cylinder bore</i>	C40

HB250 TECHNICAL SHEET

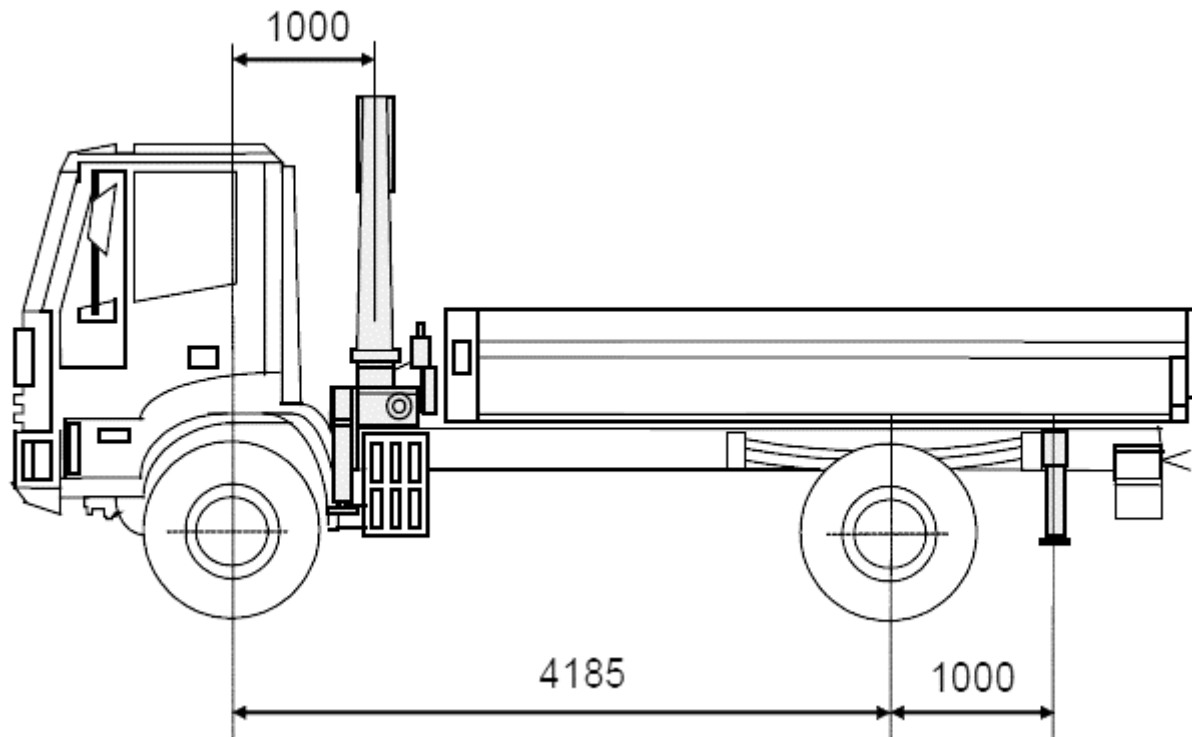
BASE DIMENSIONS, TIE MOUNTING RODS & ROTATION SCREWS



Tie mounting rods	N°8 M30x2 39NiCrMo3 QT Tightening torque 700 Nm
Fixing bolts for 1 rotation cylinder	N°4 M16x45 8.8 UNI 5931 Tightening torque 120 Nm



Fixed parts weights [kg]	HB250		HB280	
	ST	EX (NO CE)	ST	EX (NO CE)
	2080	2125	2130	2175



GVW = 19 ton

CHASSIS DATA

Front axle

Front axle tare weight = 3845 kg
Allowable front axle weight = 7500 kg

Rear axle

Rear axle tare weight = 2045 kg

OUTFIT WEIGHTS

Body weight = 1000 kg
Crane weight = 3690 kg (HB280 E5)
Counterframe weight = 800 kg

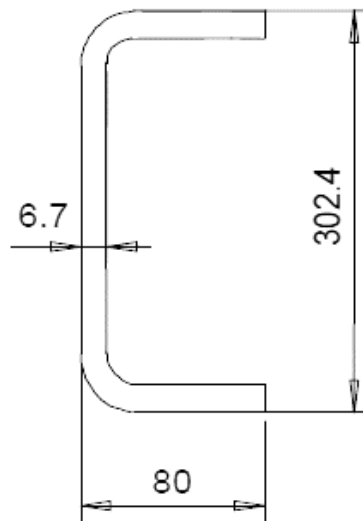
Rear beam stabilizers

Min. WIDTH = 5000 mm
Rear stabilizer weight = 550 kg

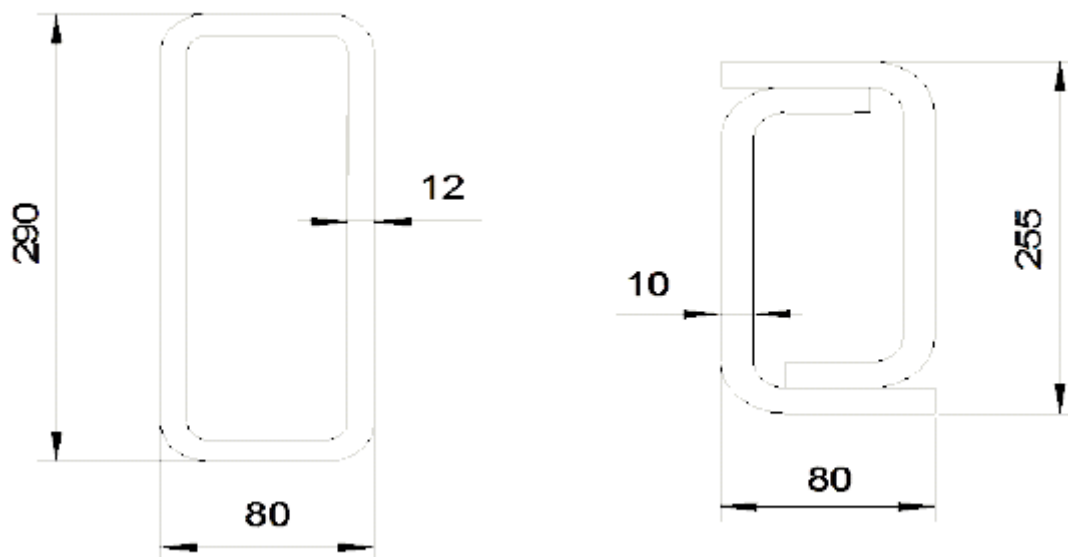
Stability index = 1.47

Max dynamic moment [daNm]	31455
---------------------------	-------

Min frame section (truck GVW = 19 ton; steel S355)

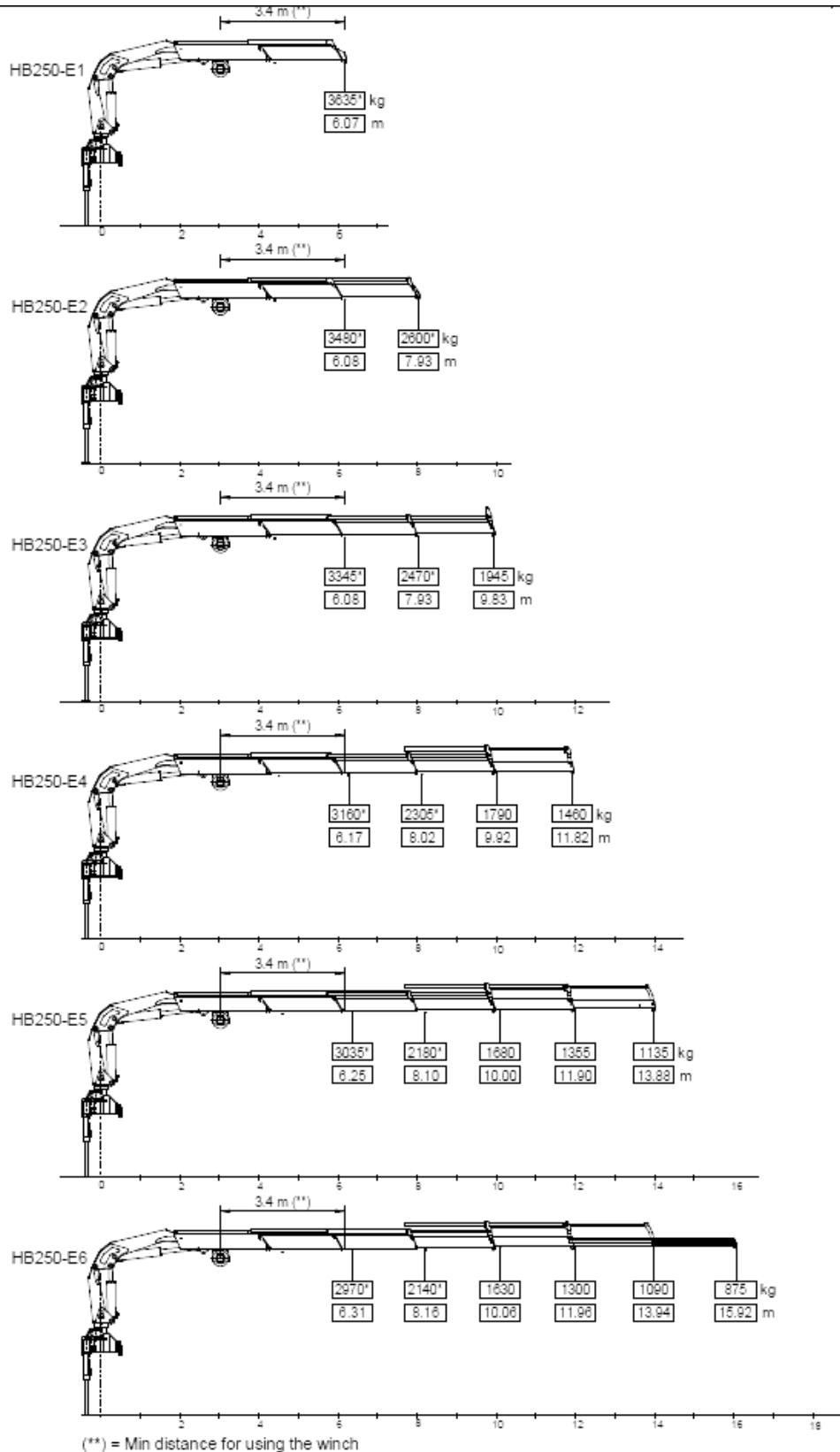


Min counterframe section (steel S355)

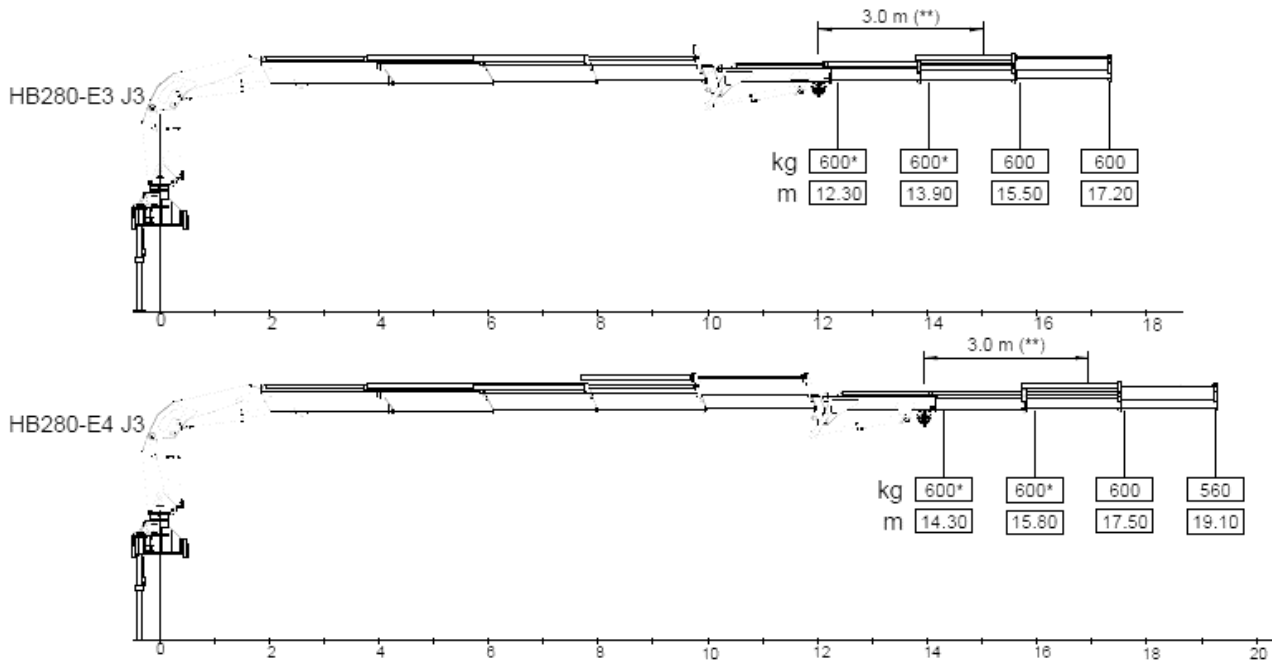


Max winch direct pull [kg]

2000



Max winch direct pull [kg]	600
-----------------------------------	------------



(**) = Min distance for using the winch if this is installed on jib boom

(**) = Min Abstand für Benutzung der Winde wenn aufm Jib-Ausleger installiert

Max allowable weight [kg]	420
Max working pressure [bar]	200

THE CAPACITIES OF THE ACTIVATED CRANES (FOR GRAB OR BUCKET) ARE DERATED BY 30% RESPECT TO THE STANDARD CRANES

