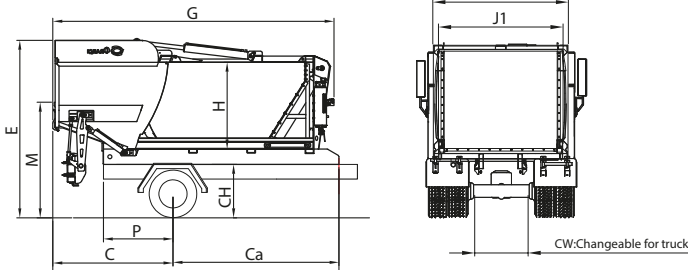




OMN 02

 **ORAKÇI**
Machinery Industry Co.



1. DIMENSION

	Code	5 m ³	6 m ³	7 m ³	8 m ³	10 m ³	12 m ³
Rear Length(over hang)	C	854	1206	1558	1910	2614	3318
Ground Clearance	CH	850	850	850	850	850	850
Vehicle Total Length	D	3494	3846	4198	4550	5254	5958
Body Height	E	2825	2825	2825	2825	2825	2825
Body Inner Height	H	1375	1375	1375	1375	1375	1375
Useful Chassis Length	Ca	1584	1936	2288	2640	3344	4048
Chassis Width	CW	May Vary by According to Vehicle					
Body Length	G	3414	3766	4118	4470	5174	5878
Hopper Height	M	1840	1840	1840	1840	1840	1840
Body Inner Width	J1	1775	1775	1775	1775	1775	1775
Body Outer Width	J2	1945	1945	1945	1945	1945	1945
Frame Rear Length	P	1910	1910	1910	1910	1910	1910
Weight (kg) ±%3		2350	2500	2650	2800	3100	3300

2. BODY CAPACITY

Capacity	5 m ³ - 12 m ³
----------	--------------------------------------



3. HYDRAULIC FEATURES

Pump	Pump Types	Gear Pump
	Max. Operating Pressure	160 - 180 bar
	Pump Flow	OMN 02
		43 - 55 lt/min.
		* The pump varies according to the engine output speed. Motor output max. 1000 rpm



Oil Tank	Capacity	OMN 02
		90 lt.
	Suction Filter	125 µc
	Return Filter	25 µc

4. MATERIAL

We use hardox 450 as an option to extend equipment life on areas exposed to abrasion.

Material	Body Floor	Body Roof	Blade Bottom Plate
	S355J2C+N	S355J2C+N	S355J2C+N
	Hardox 450 (Optional)	Hardox 450 (Optional)	Hardox 450 (Optional)

5. HYDRAULIC CYLINDER SPECIFICATION

Name	Type	Stage	Pipe Diameter (mm)	Shaft Dia (mm)
			Outer Diameter	
Blade Cylinder	Two-Sided	1	Ø100 x Ø115	Ø60
Bin Lifter Cylinder	Two-Sided	1	Ø70 x Ø85	Ø50
Locking Cylinder	Two-Sided	1	Ø40 x Ø50	Ø20
Ejector Plate Cylinder (varies according to body volume capacity)	Telescopic Duplex	2-3	Ø105-Ø140	Ø55



6. BIN LIFT SYSTEM

Bin Lifter (Op.)

120 lt - 1100 lt (EN 840)
400 lt - 800 lt (TR)

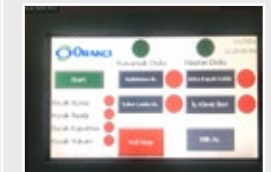
7. OPTIONAL FEATURES

Hydraulic Control System	<ul style="list-style-type: none"> • Manuel • Semi Automatic • Automatic 	Hardox		CANBUS	
Container Opener Bar		Bin Stopper		Bin Lifter	
EN 1501 : Garbage Trucks general and safety requirements		Steps (EN 1501)		Mud Guard	
Waste water tank		Ladder		Bicycle Barrier (EN 150)	
Handle Bar (EN 1501)		Fire Extinguisher Box		Recording Device	
Beacon Lamp (2 or Single)		Camera		Emergency Button (EN 1501)	
Warning System (EN 1501)		Step Sensor (EN 1501)		Equipment Control Unit Direction	Rear / Left

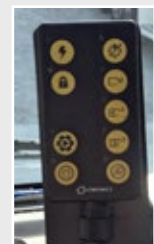
8. VEHICLE WARNING SYSTEMS

Manuel	Semi Automatic	Automatic
Beacon Lamp	Beacon Lamp	Beacon Lamp
Çakar Lamba	Çakar Lamba	Çakar Lamba
Hopper Lighting Lamps	Hopper Lighting Lamps	Hopper Lighting Lamps
Stop Lamps	Stop Lamps	Stop Lamps
Driver Warning (Op.)	Driver Warning (Op.)	Driver Warning
Side Marker Lights (Op.)	Side Marker Lights (Op.)	Side Marker Lights (Op.)
Side Beacon Lamp (Op.)	Side Beacon Lamp (Op.)	Side Beacon Lamp (Op.)
		Reserving Alarm
		Footboard Sensor (Op.)
		30 km/h Speed Limiter (Op.)
		Camera System (Op.)
		Hopper Outer Emergency Buttons
		Tailgate Extension Sensor (Op.)
		Double Hand Control Buttons
		Arka Kapak Yükseltme Sensörü (Op.)

Cabin Control System (EN 1501)



Touch Screen



Button Control

9. Each new designed rear loader is tested at least 6 months on the field before taken into serial production .Thus we ensure a product with a long life to maximize customer satisfaction.
10. In order to ease operation at dark ,the visibility capacity has been increased by the use of LED lamp in standart features.
11. Waste can easily transfer to ORV series rear loading garbage trucks and the equipment does not need to go to the landfill for waste disposal
12. The product is designed to have operate to narrow streets.
13. 1 year product warranty against production defects and 10 years spare parts warranty is provided..
14. Container lift cylinders are equipped with parachute valves
15. A closed-circuit camera system is installed in the driver's cabin, increasing communication between the driver and the operator that ensures work safety. Optionally, the internal display is provided for ease of operation.
16. Rear Loaders are designed to be transported in containers... By this way can reach customers all over the world.
17. There is no waste water leakage due to the equipment being monoblock (one piece)
18. Due to the curved roof, there is no rain water accumulated on top.
19. We provide a wide range of spare parts after the warranty. At the same time, we keep customer satisfaction at the highest level with a wide sales network and aftersales support..
20. Compaction ratio 1: 3 (May vary depending on waste density.)
21. OMN can be delivered in semi knocked down form adapting to different business models depending on customer and market needs .
22. The discharge of the waste is provided with the an inner blade and a double-acting telescopic cylinder.



HEAD OFFICE SALES DPT.

Üçevler Mh. Tanay Cad. Esra Sokak
Orakçı İş Merkezi No:12, PK: 16120
Nilüfer BURSA / TÜRKİYE
T : +90 (224) 441 81 11
F : +90 (224) 443 52 56
E : bilgi@orakci.com

FACTORY

Ovaakça Santral Mah.
Kahraman Sokak No:52, PK: 16335
Osmangazi Bursa / TÜRKİYE
T : +90 (224) 493 24 98
F : +90 (224) 493 24 99
E : info@orakcimakina.com

QUALITY CERTIFICATES

- DIN EN ISO-9001: 2015
- DIN EN ISO-14001: 2015
- EN 1501-1: 2011 + A1: 2015

www.orakcimakina.com

